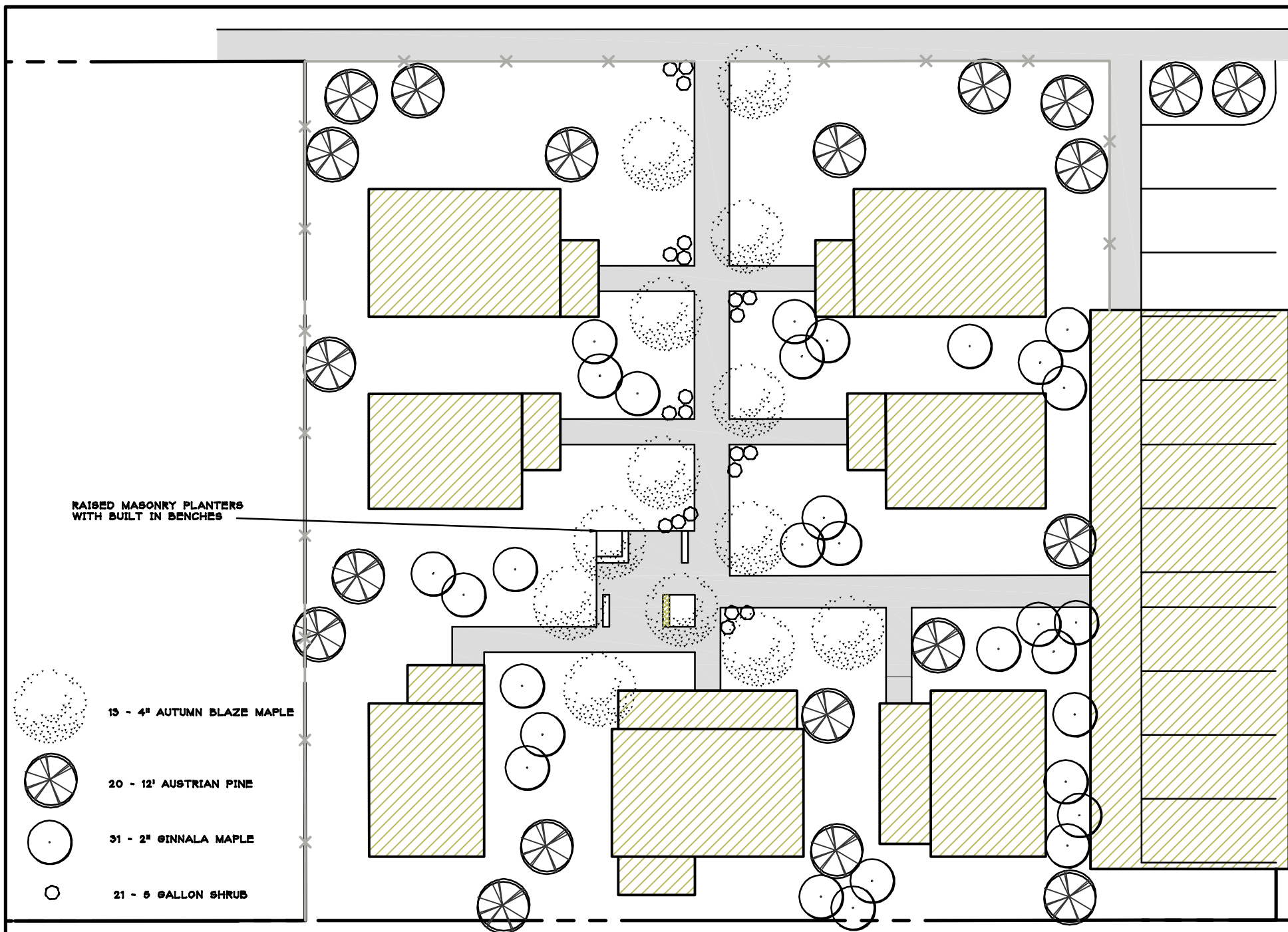


RIMMROCK COTTAGES
CUTTERS SUBDIVISION HAILEY





Print Date: 05.01.08
Drawn Date: 05.01.08

Sheet Number:

L-1



RAISED MASONRY PLANTERS WITH BUILT IN BENCHES

-  13 - 4" AUTUMN BLAZE MAPLE
-  20 - 12' AUSTRIAN PINE
-  31 - 2" GINNALA MAPLE
-  21 - 5 GALLON SHRUB

NOTES:
COTTAGE WALKWAYS TO BE MATCH EXISTING CONCRETE SIDEWALKS. LAWN TO BE A NATIVE LOW GROW GRASS WITH A WILDFLOWER BLEND. FENCE TO BE MADE OUT TYPICAL POST AND RAIL.

